



LPA-U

ADVANCED MOTORISED LASER POWER ATTENUATOR for UNPOLARISED BEAM

LPA-U series

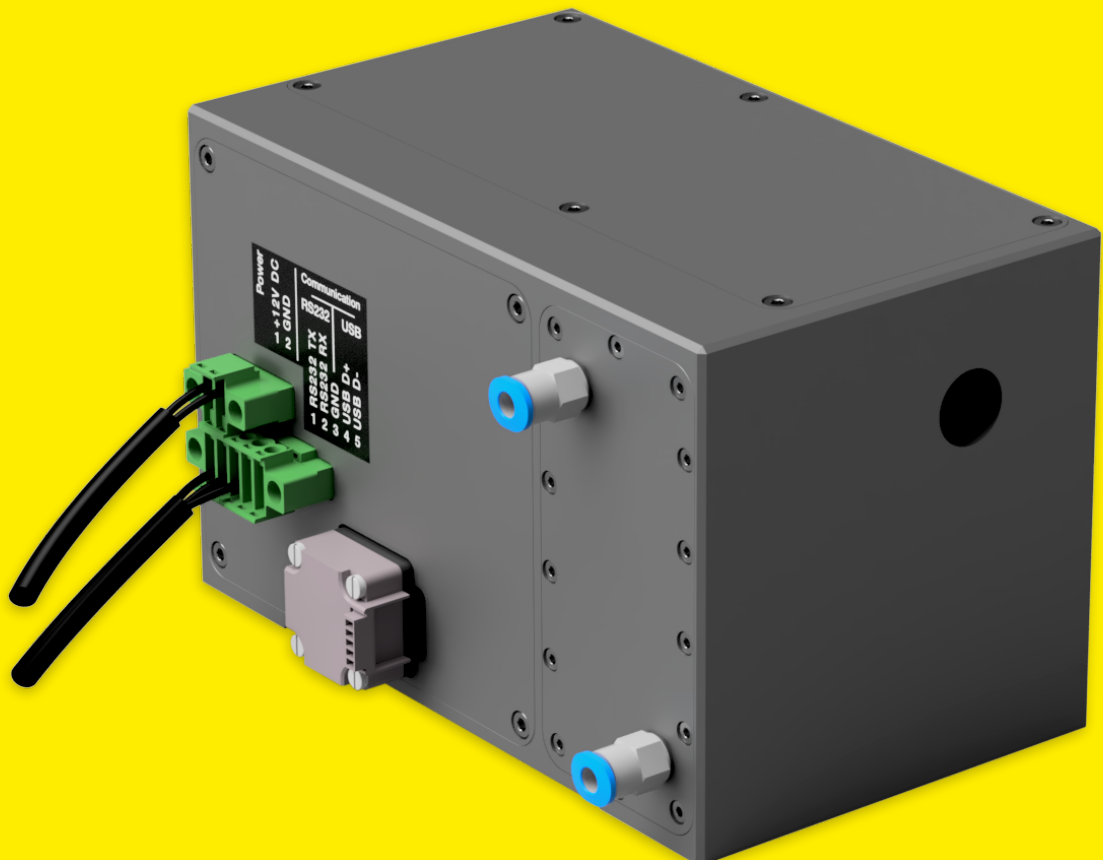


Table of contents

Table of contents.....	2
1. Safety requirements	4
2. Operation principle	5
2.1.Features and advantages.....	5
2.2.Optical design.....	5
3. Product description	6
3.1.Optical specifications.....	6
3.2.Mechanical specifications	6
3.3.Electronic specifications.....	6
3.4.Conditions	6
3.5.Controller.....	7
3.5.1.Interfaces, pinout.....	7
3.6.Voltage levels.....	7
3.7.What's in the box?	7
3.8.Available accessories.....	7
4. Software	8
4.1.Minimum Hardware requirements (recommended)	8
4.2.System requirements.....	8
4.3.Supported client operating systems.....	8
4.4.Installing the software	8
4.5.Using the software.....	10
4.5.1.Connection, device selector.....	10
4.5.2.Settings, calibration	10
4.5.3.Main window	11
4.6.Updating the firmware	12
4. Commands	13
4.1.Interface	13
4.2.Description	13
4.3.Serial communication example in Python.....	15
5. Technical drawings.....	16

LPA-U

Advanced Motorised laser power attenuator for Unpolarised beam

Congratulations on your purchase of the advanced motorised laser power attenuator from Optogama, UAB.

September 2022

Copyright UAB Optogama. All rights reserved.

No part of this manual may be reproduced, transmitted in any form without the permission of Optogama.

Claims will not be accepted and warranty repair will not be carried out in case of improper use, incorrect service and maintenance not according to product instructions. Warranty claim shall not be accepted if there are any signs of:

- Non-authorized alteration
- Disassembling of the device
- Mechanical or any external damage
- If warranty term has expired
- Serial number of the product is missing

Symbols

CAUTION!

Sections marked with this symbol indicate dangerous situations that can result in damage to the device, components connected to it or operator.

NOTE:

Sections marked with this symbol indicate important information on laser power attenuator or about this manual.

Due to constant development of our products we reserve the right to make changes in the production line without further notice. Up-to-date information is available at our website www.optogama.com. If there are any further questions, please contact us.

Optogama is not liable for damage or injury resulting directly or indirectly from use of this product for anything other than its intended purpose.

The motorised laser power attenuator is intended for industrial and scientific use only. If there are any other electrical devices connected to or used in conjunction with the laser power attenuator, all legal regulations and technical standards that are applied to those devices must be observed as well.

For any technical assistance and consultation please contact your local dealer or directly sales@optogama.com.

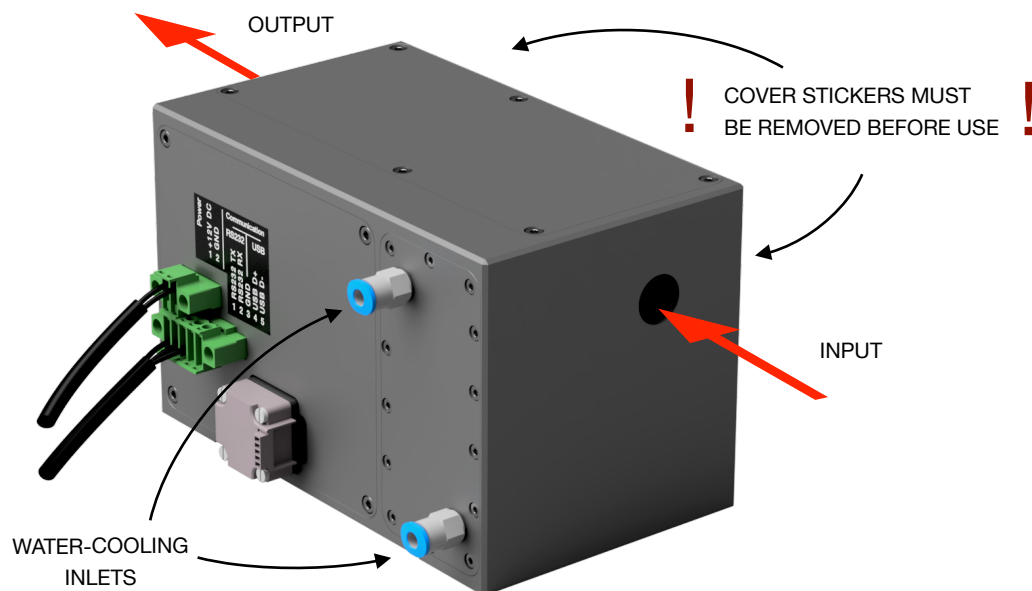
1. Safety requirements

- All safety instructions must be followed.
- All rules and regulations concerning the safe operation of lasers must be known and applied while installing and operating motorised laser power attenuator.
- Even when wearing safety glasses avoid eye contact with direct or scattered laser light while assembling, installing and operating the device.
- The device should never be exposed to dirt, dust or moisture.
- Before any operation make sure the device is installed correctly and well adjusted and all cover stickers are removed.
- Protective measures should be considered if necessary.
- Electrical safety requirements must be complied while operating this device.

CAUTION! High laser output power may damage or destroy optical elements.

CAUTION! The device is meant to be used with a collimated beam. Users take full responsibility when using the device with a highly converging beam.

CAUTION! Before increasing laser power make sure the device is aligned and there is no beam cut. It may damage optical elements.



2. Operation principle

LPA-U consists of unique dielectric coated fused silica angular filter and a window with antireflective coating for beam shift compensation.

Unpolarised laser power is attenuated by rotating an angular filter which change the transmittance of unpolarised laser beam. The antireflective window is rotated at the same time to compensate the beam shift. The Both elements are coated for the desired wavelength. The attenuation level is controlled by the software.

NOTE: Before use calibration is recommended.

CAUTION! Before increasing laser power make sure the device is aligned and there is no beam cut. It may damage optical elements.

2.1.Features and advantages

- Designed for unpolarised laser beam
- Up to 200W of average laser power.
- Integrated controller
- Absolute position encoder - no homing required
- High accuracy - ± 0.005 deg
(less than $\pm 0.01\%$ of laser power)
- Robust design with water-cooling
- Clear aperture - $\varnothing 12$ mm
- Fast adjustment - less than 0.5 sec (min to max)
- High damage threshold:
up to $10\text{J}/\text{cm}^2$ (10 ns @ 1064 nm)

2.2.Optical design

LPA-U optical elements are coated for high LIDT ($10\text{ J}/\text{cm}^2$) (10 ns @ 1064 nm) and can be applied for high power lasers.

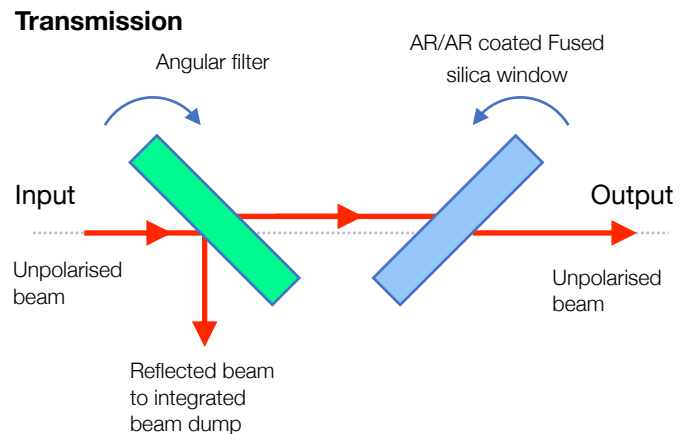


Fig 1. Schematic explanations of optical design of LPA-U motorised laser power attenuator.

3. Product description

Advanced motorised laser power attenuator LPA-U is a unique device designed for unpolarised laser power control with integrated controller and absolute position encoder.

The LPA-U is produced in the UV, visible and NIR spectral ranges, from 343 nm to 2000 nm and 10,6 μm . This device is combined with the unique mechanical robust design which ensures high repeatability.

All optical components of the LPA-U are made for high LIDT and provide stable and reliable performance even using them with high power lasers in industrial applications.

A secondary laser beam from laser power attenuator unit is rejected to an internal beam dump. Water-cooling is used for avoiding any thermal effects or stress in the housing of the LPA-U device.

3.1. Optical specifications

Clear input aperture	$\varnothing 12$ mm
Clear output aperture	$\varnothing 12$ mm
Power attenuation range	<2 % to >95 %* *depends on wavelength
LIDT coating	>10 [J/cm ²] (10 ns @ 1064 nm)
Adjustment time	< 0.5 sec (min to max)
Absolute pos. encoder	Yes (resolution 0.0005 deg.)
Resolution	175,543 μsteps in full rotation (0.002 deg, 7.2 arcsec, 0.035 mrad)
Accuracy	± 0.005 deg, (± 18 arcsec, 0.087 mrad, less than ± 0.01 %)
Motor	2 phase stepper motor, 200 steps with 256 $\mu\text{stepping}$
Available coatings	
A. Standard wavelengths	
1 st harm	
1070 nm	1064 nm
C. Custom wavelengths	
Any in range:	343 - 2000 nm
CO ₂ line*:	10.6 μm
*using ZnSe elements	

3.2. Mechanical specifications

	LPA-U
Length	135 mm
Width	93,5 mm
Height	85 mm

3.3. Electronic specifications

Interface options:

Terminal	Using commands described in p. 12 "Commands"
Software	Using LPA software
Input voltage	DC 12 V
Transmission speed	up to 115,200 bits/s (RS-232) full speed USB 2.0

3.4. Conditions

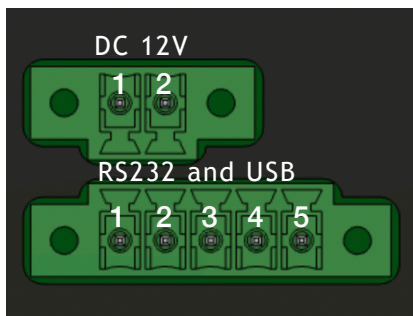
Operating temperature	+10 °C to +40 °C
Storage temperature	-15 °C to +50 °C

3.5. Controller

3.5.1. Interfaces, pinout

- There are two contacts:
 - 691382000005 for communication;
 - 691382000002 for Power supply - DC 12 V
- Connector wire gauge parameters:
 - Wire Gauge MAX. - 16 AWG
 - Wire Gauge MIN. - 24 AWG

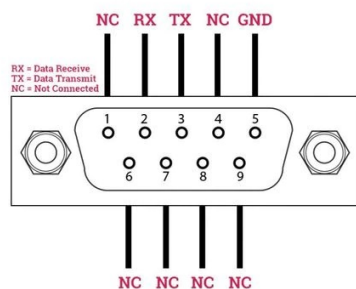
Type	Contact	Connector
Communication	691323100005	691364100005
Power supply	691323100002	691364100002



PINOUT

DC 12 V	RS232	USB
1. +12 V DC	1. RS232 TX	3. GND
2. GND	2. RS232 RX	4. USB D+
	3. GND	5. USB D-

NOTE: RS-232 cable has standard DB9 female connector at one end:



3.6. Voltage levels

The RS-232 standard defines the voltage levels that correspond to logical one and logical zero levels for the data transmission and the control signal lines. Valid signals are either in the range of +3 to +15 volts or the range -3 to -15 volts with respect to the "Common Ground" (GND) pin; consequently, the range between -3 to +3 volts is not a valid RS-232 level. For data transmission lines (TxD, RxD), logic one is defined as a negative voltage, the signal condition is called "mark". Logic zero is positive and the signal condition is termed "space".

LPA-U operates on signal levels of ± 5 V and can accept signal levels of up to ± 15 V. Because the voltage levels are higher than logic levels typically used by integrated circuits, special intervening driver circuits are required to translate logic levels. These also protect the device's internal circuitry from short circuits or transients that may appear on the RS-232 interface and provide sufficient current to comply with the slew rate requirements for data transmission.

3.7. What's in the box?

Standard kit includes:

- Integrated motorised laser power attenuator
- Software
- Power supply DC 12V
- USB (1.5 m) cable

NOTE: Other accessories must be purchased separately.

3.8. Available accessories

RS232 cable:

- 1.8 m
- 5 m
- 10 m
- 15 m

4. Software

4.1. Minimum Hardware requirements (recommended)

Processor	1 Ghz
RAM	512 Mb
Disk space	
32-bit	4,5 Gb
64-bit	4,5 Gb

4.2. System requirements

To install the application you must have administrator rights on your computer.

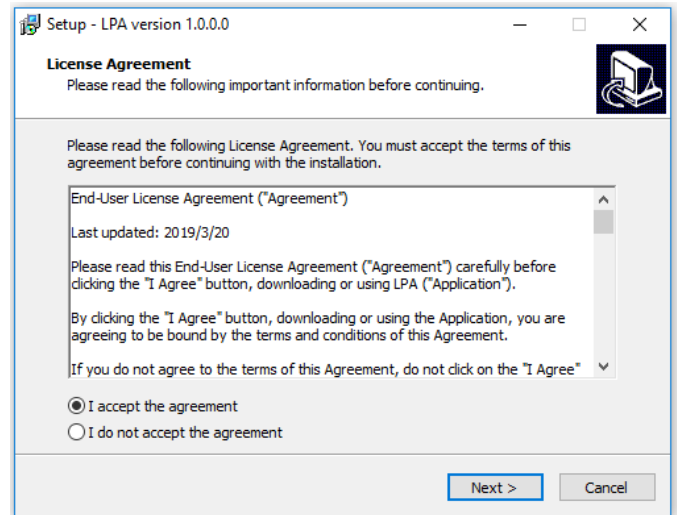
To run LPA application Microsoft .NET 4.5.2 Framework or later must be installed. The installer detects Microsoft .NET Framework and installs it. Administrator privileges are required for installation. Contact your network administrator if you do not have administrator rights on the computer.

4.3. Supported client operating systems

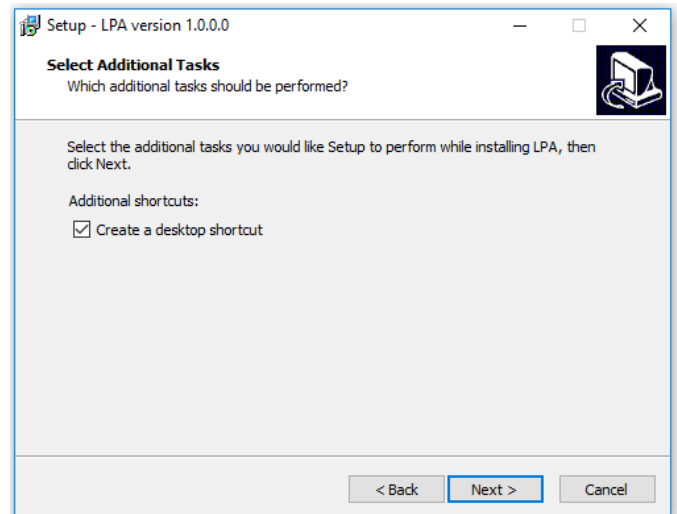
- Windows Vista SP2
- Windows 7 SP1
- Windows 8
- Windows 8.1 (.NET included with OS)
- Windows 10 (.NET 4.6 included with OS)
- Windows Server 2008 SP2/R2
- Windows Server 2012 (.NET included with OS)

4.4. Installing the software

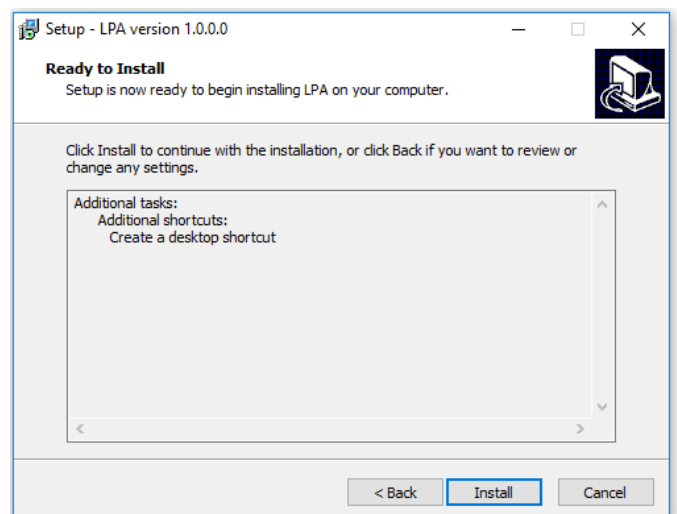
1. Check and download the latest LPA software from our website (www.optogama.com, www.4lasers.com) or contact us directly at sales@optogama.com.
2. Run the downloaded software installation file. Installation window will appear, click “Next” to continue:



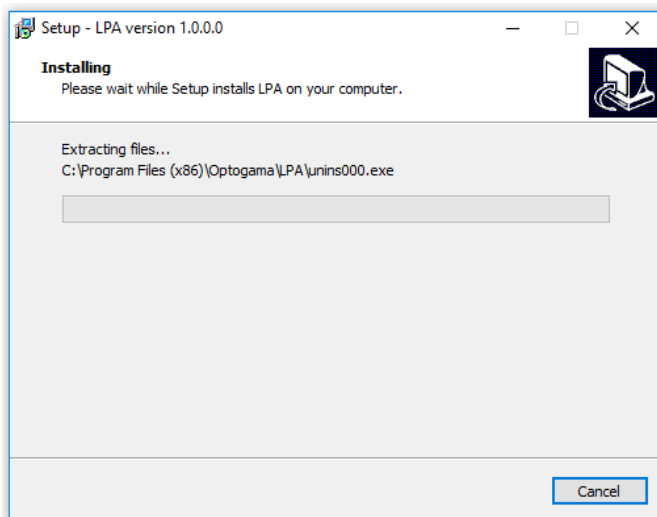
3. Select “Create a desktop shortcut” if it is necessary and click “Next”:



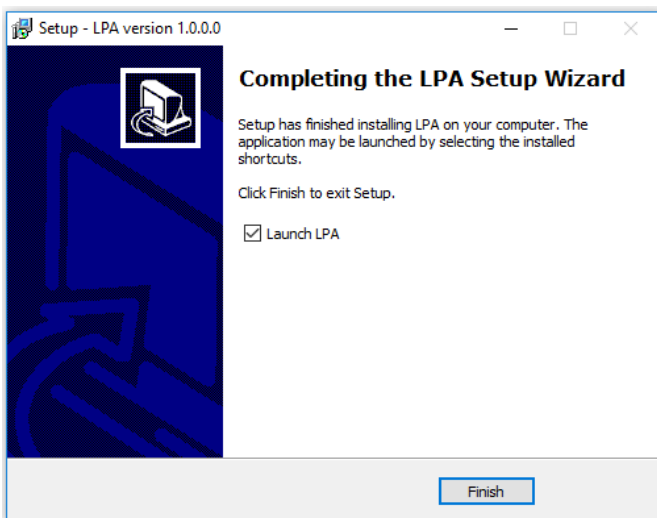
- Review setup information and proceed the installation. To continue click “Install”:



4. Setup will finish the installation:



5. Press "Finish" to end the installation:



6. Connect the PC and LPA-U via USB or RS232 cable.
7. Plug in power supply to controller and AC adaptor to wall outlet.
8. The device will be detected and configured.
9. The device installation is complete.

4.5. Using the software

CAUTION! Do not switch the laser ON if the device is not adjusted properly, it may damage or destroy optical elements.

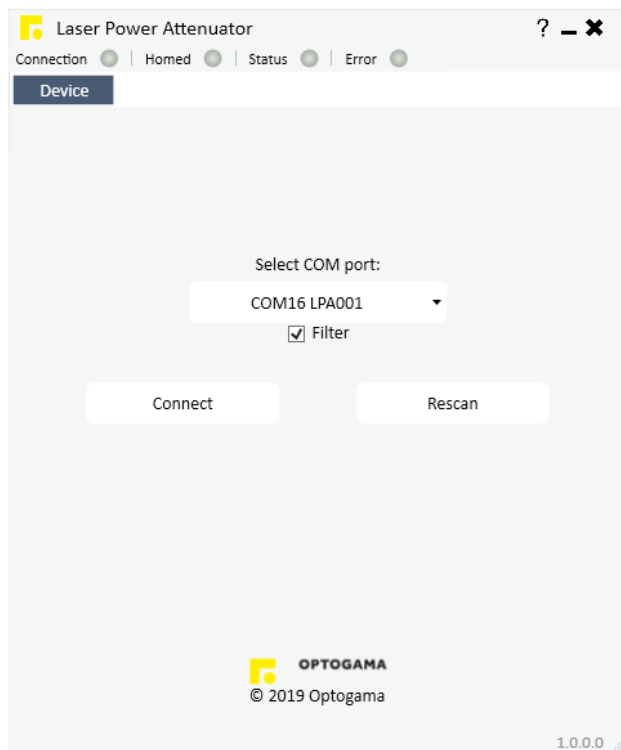
Launch LPA program using LPA icon on the desktop.



4.5.1. Connection, device selector

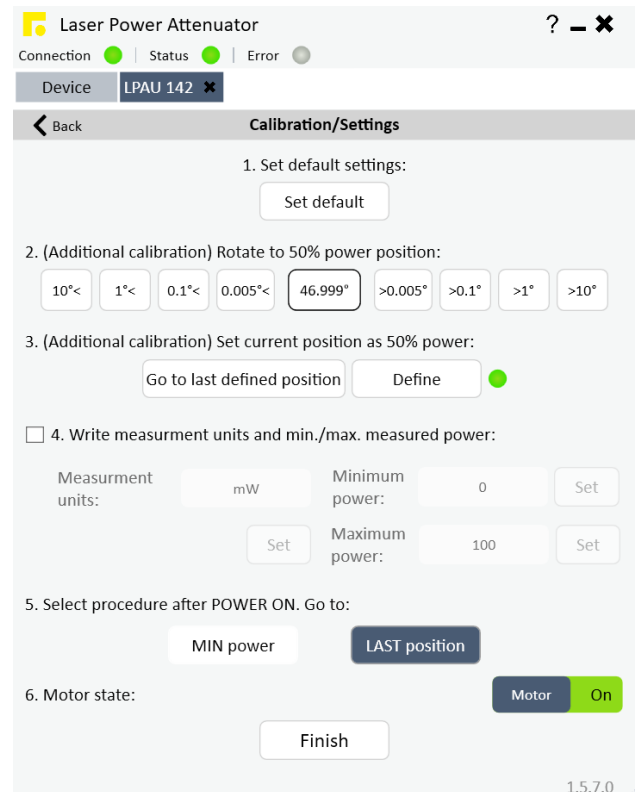
10. Device selector window will appear. Select COM port (to which the laser power attenuator is connected) from the drop down menu. Press **“Connect”** to connect the device or **“Rescan”** if your device is not visible. Select **“Filter”** when device is connected via USB cable. All other COM ports will be hidden except our device.

NOTE: When connecting via RS232 cable “Filter” must be deselected, otherwise device will not be visible.



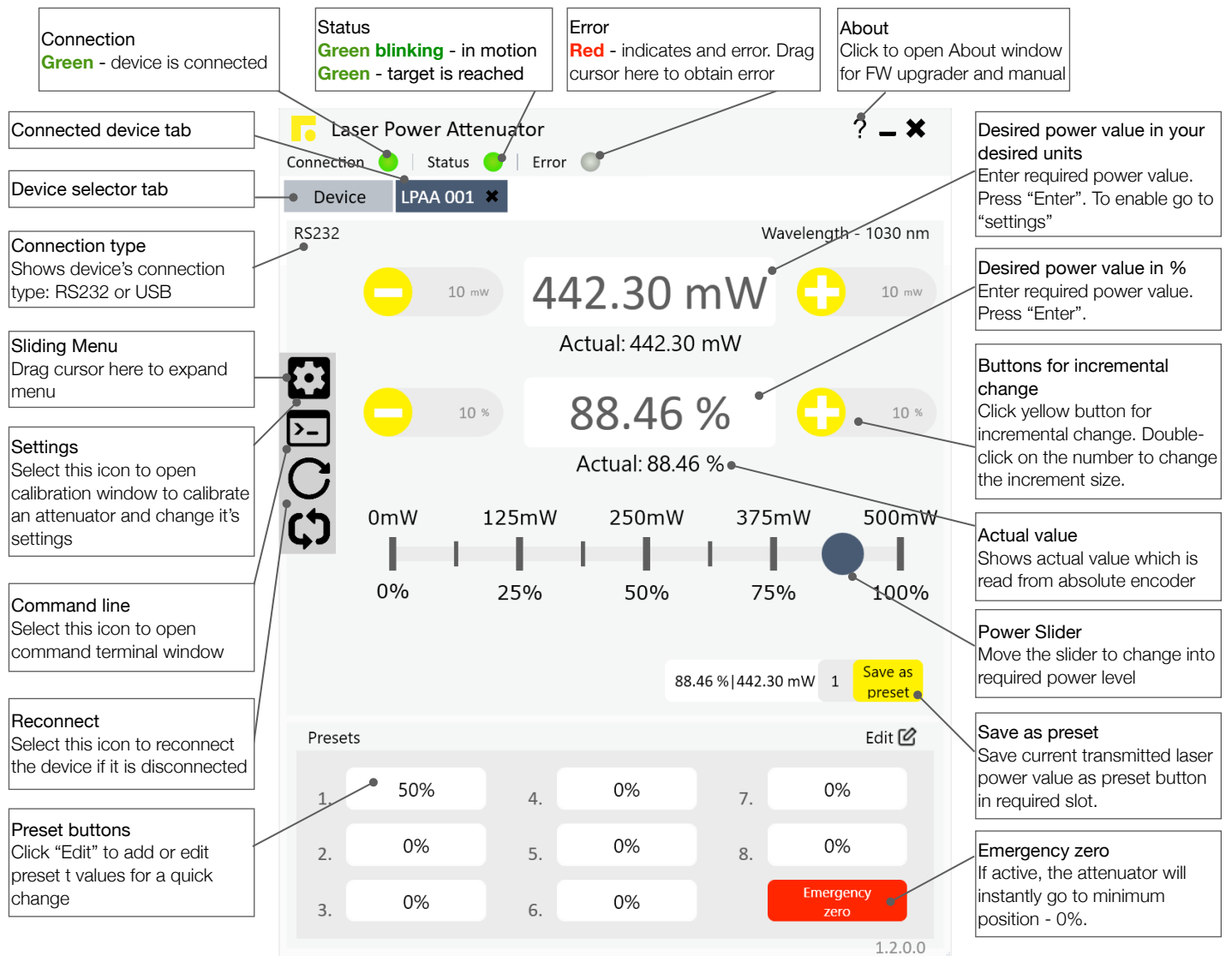
4.5.2. Settings, calibration

11. Each unpolarised laser power attenuator is pre-calibrated, however to achieve higher precision calibration is recommended for the first time.
12. For LPA-U calibration, move your mouse to the left side of the window on a gear symbol from the sliding menu and select “Settings”. Settings menu will appear:



13. To succeed calibration please follow calibration steps:
 1. Set default settings.
 2. Find 50% laser power position.
 3. Set current position as 50% power “Define”.
 4. Choose additional measurement units if necessary
 5. Select procedure after turning the device ON. By default the device will reach last desired value
 6. Calibration is done and device is ready to use. Press “Finish” and you will be greeted into MAIN window.

4.5.3. Main window



Connection
Green - device is connected

Status
Green blinking - in motion
Green - target is reached

Error
Red - indicates and error. Drag cursor here to obtain error

About
Click to open About window for FW upgrader and manual

Connected device tab
Laser Power Attenuator

Device selector tab
Device: LPAA 001

Connection type
Shows device's connection type: RS232 or USB

Sliding Menu
Drag cursor here to expand menu

Settings
Select this icon to open calibration window to calibrate an attenuator and change its settings

Command line
Select this icon to open command terminal window

Reconnect
Select this icon to reconnect the device if it is disconnected

Preset buttons
Click "Edit" to add or edit preset values for a quick change

Desired power value in your desired units
Enter required power value. Press "Enter". To enable go to "settings"

Desired power value in %
Enter required power value. Press "Enter".

Buttons for incremental change
Click yellow button for incremental change. Double-click on the number to change the increment size.

Actual value
Shows actual value which is read from absolute encoder

Power Slider
Move the slider to change into required power level

Save as preset
Save current transmitted laser power value as preset button in required slot.

Emergency zero
If active, the attenuator will instantly go to minimum position - 0%.

Wavelength - 1030 nm

442.30 mW
Actual: 442.30 mW

88.46 %
Actual: 88.46 %

0mW 125mW 250mW 375mW 500mW
0% 25% 50% 75% 100%

88.46 % | 442.30 mW 1 Save as preset

Presets Edit

1. 50%	4. 0%	7. 0%
2. 0%	5. 0%	8. 0%
3. 0%	6. 0%	Emergency zero

1.2.0.0

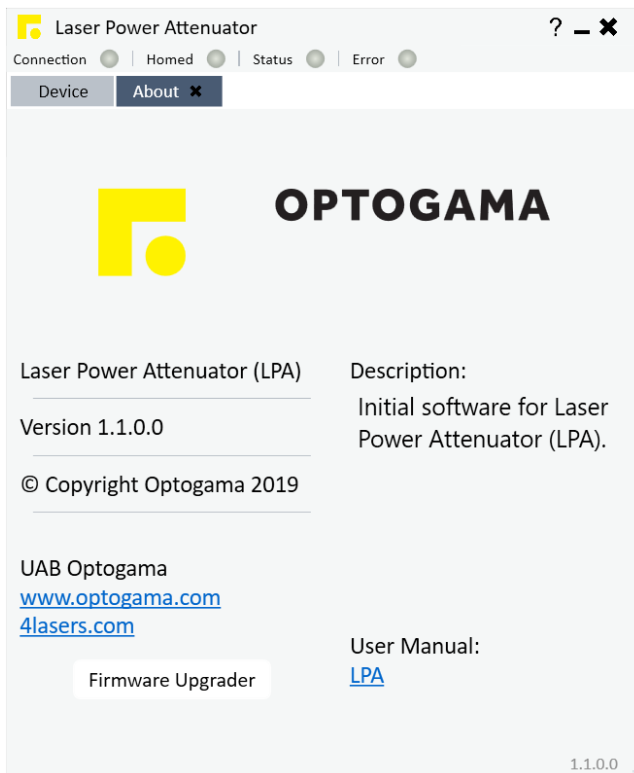
4.6. Updating the firmware

If your device firmware version doesn't match to software's firmware version while connecting to device via LPA software you'll be asked to update your device. If update request pops-up, but you want to keep current firmware and use LPA software, you must use software compatible with that firmware version.

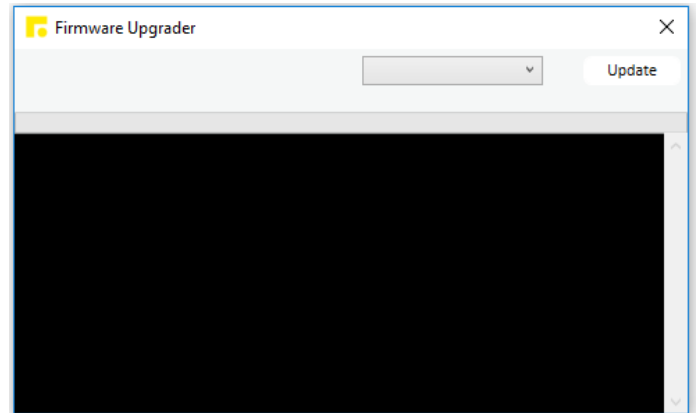
NOTE: Compatible software had been delivered with device.

In order to update your device or rewrite device firmware - **USB cable** must be used (update through RS232 cable is not available).

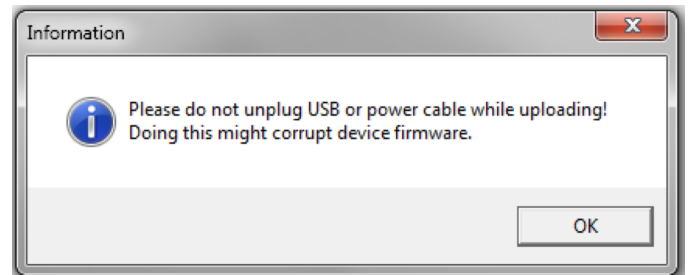
1. Click button **"Firmware Upgrader"** in the **About tab** of LPA software:



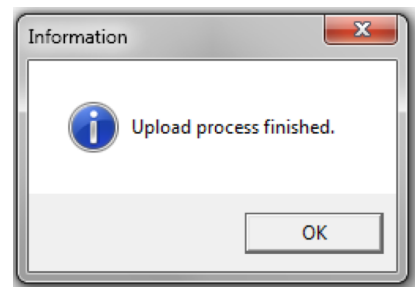
2. In the opened window press **"Update"** button. You will be asked if you really want to update device:



After a warning device **motors will be shut down** and update will start:



3. Update should be done in about a minute. If everything went successfully message box like this should pop-up:



Now you're ready to go.

4. Commands

The device can be controlled using either **USB 2.0** or **RS-232** interface. The device will switch to the required interface upon connection of the appropriate cable.

When using the RS-232 interface, the controller communicates on the **configured baud rate** (see Command descriptions), using **8 data bits, no parity and 1 stop bit**.

4.1. Interface

When the device is connected to the PC through the USB interface, it will appear as a **Virtual Serial COM port**, so all PC side communications are interchangeable between the two interfaces.

All communications with the device are conducted by sending **literal ASCII string commands terminated with the newline character \r**. For example, the power can be set to 10% by issuing a “**LPA>PWR!_10\r**” command to which the device will respond with “**LPA>PWR_10\r**”.

4.2. Description

Command	Response	Comments	Example usage	
			User command	Device response
Motion Power - PWR, Angle - ANG, Stop - STP				
LPA>PWR?	LPA>PWR_X.XXX	Command used to get the current power value in percentages. (Read and calculated from absolute encoder)	LPA>PWR?	LPA>PWR!_45.125
LPA>PWR!_X.XXX	LPA>PWR!_X.XXX	Command used to set a new power value in percentages.	LPA>PWR!_10	LPA>PWR_10.000
			LPA>PWR!_45.1	LPA>PWR_45.100
			LPA>PWR!_0.07	LPA>PWR_0.070
LPA>ANG?	LPA>ANG_X.XXX	Command used to get the current angle value in degrees. (Read from absolute encoder, 0-360 deg)	LPA>ANG?	LPA>ANG_22.143
LPA>ANG!_X.XXX	LPA>ANG_X.XXX	Command used to set the angle value in degrees (0-360)	LPA>ANG!_22.5	LPA>ANG_22.500
LPA>STP!	LPA>STP	Command used to stop motor instantly. Device could be used normally, homing is not require.	LPA>STP!	LPA>STP
Calibration Calibration - DEF				
LPA>DEF!	LPA>DEF_offset	Command used to define current angle position as 50% power position. Used for calibration.	LPA>DEF!	LPA>DEF_34.067
LPA>DEF?	LPA>DEF_offset	Command used to get an angle of precalibrated 50% laser power. Used for calibration.	LPA>DEF?	LPA>DEF_34.067
Settings Baud rate - BAUD, Default settings - LDF				
LPA>BAUD?	LPA>BAUD_baud rate	Command used to get baud rate.	LPA>BAUD?	LPA>BAUD_115200
LPA>BAUD!_baud rate	LPA>BAUD_baud rate	Command used to set baud rate. 115200 by default. Available speeds: 115200, 57600, 38400, 19200, 9600, 4800. Other values are ignored.	LPA>BAUD!_57600	LPA>BAUD_57600
LPA>LDF!	LPA>LDF	Command used to load default settings. Device after this command must be recalibrated .		

Command	Response	Comments	Example usage	
			User command	Device response
Information Device state - STATUS, Wavelength - WL, Firmware v. - FW, Serial number - ID				
LPA>STATUS?	LPA>X_Y	Command used to get the current state of the device. X signifies if motor is ON. Y signifies the error byte. X="1" motor is ON (enabled) X="0" motor is OFF (disabled) Y = 16 bits digit with following bits: bit0 -> driver error bit1 -> driver high temperature warning bit2 -> driver over temperature bit3 -> some type of error in the driver load bit4 -> motor is stuck bit5 -> under voltage error bit6 -> external memory error, working/ calibration data may be corrupted bit7 -> reset has occurred bit8 -> min/max angle exceeded bit9 -> - bit10 -> target position is reached bit11 -> - bit12 -> motor is stand still bit13 -> - bit14 -> - bit15 -> device calibration is done	LPA>STATUS?	LPA>1_0
			LPA>STATUS?	LPA>0_0
			LPA>STATUS?	LPA>1_2
LPA>WL?	LPA>WL_XXX	Command used to get the design wavelength.	LPA>WL?	LPA>WL_355
LPA>FW?	LPA>_Firmware version	Command used to get firmware version.	LPA>FW?	LPA>_1.0.0.1
LPA>ID?	LPA>_LPAUXXXXXX	Command used to get serial number.	LPA>ID?	LPA>_LPAU190001
Other Echo, Reset, Motor ON/OFF				
LPA>ECHO!	LPA>ECHO	Command used for troubleshooting. The device echoes sent command before sending the response.	LPA>ECHO! LPA>TGT?	LPA>ECHO LPA>TGT? LPA>TGT_45602
LPA>NOECHO!	LPA>NOECHO	Command used to disable ECHO command.		
LPA>RESET!	LPA>RESET	Command used to reinitialise device.	LPA>RESET!	LPA>RESET
LPA>OFF!	LPA>OFF	Command used to turn motor OFF.	LPA>OFF!	LPA>OFF
LPA>ON!	LPA>ON	Command used to turn motor ON.	LPA>ON!	LPA>ON

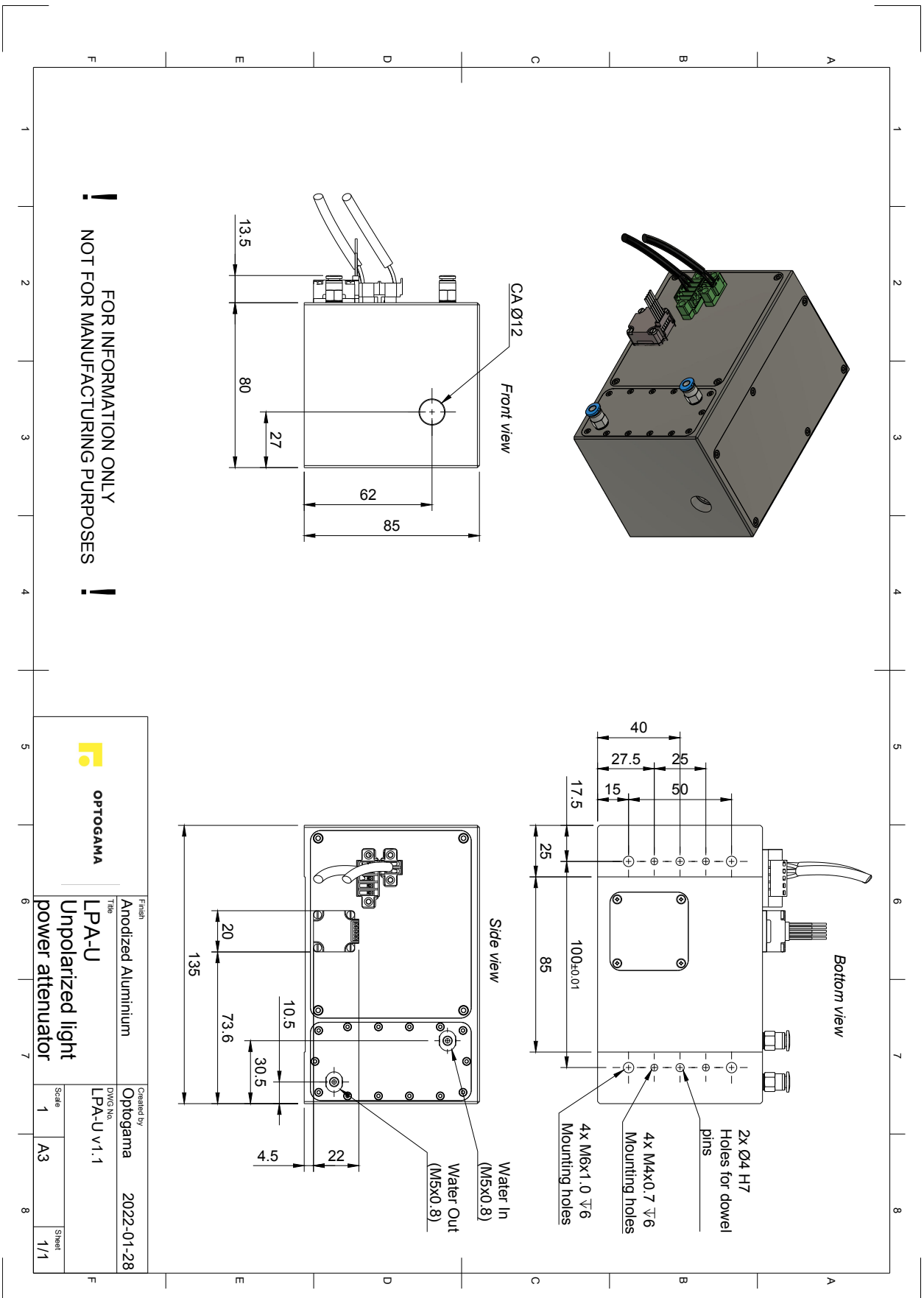
4.3. Serial communication example in Python

```

1  import serial
2  import glob
3  import sys
4  import time
5
6  def serial_ports():
7      """ Lists serial port names
8
9          :raises EnvironmentError:
10             On unsupported or unknown platforms
11          :returns:
12             A list of the serial ports available on the system
13      """
14      if sys.platform.startswith('win'):
15          ports = ['COM%s' % (i + 1) for i in range(256)]
16      elif sys.platform.startswith('linux') or sys.platform.startswith('cygwin'):
17          # this excludes your current terminal "/dev/tty"
18          ports = glob.glob('/dev/tty[A-Za-z]*')
19      elif sys.platform.startswith('darwin'):
20          ports = glob.glob('/dev/tty.*')
21      else:
22          raise EnvironmentError('Unsupported platform')
23
24      result = []
25      for port in ports:
26          try:
27              s = serial.Serial(port)
28              s.close()
29              result.append(port)
30          except (OSError, serial.SerialException):
31              pass
32      return result
33
34  if __name__ == "__main__":
35      ports = serial_ports()
36      print("Select port number ( starting from 0, 1, 2 etc.):")
37      print(ports)
38      port = ports[int(input())]
39      print(port)
40
41      # configure the serial connections (the parameters differs on the device you are connecting to)
42      ser = serial.Serial(
43          port=port,
44          baudrate=57600,
45          parity=serial.PARITY_ODD,
46          stopbits=serial.STOPBITS_TWO,
47          bytesize=serial.EIGHTBITS,
48          timeout=1 #second
49      )
50      ser.isOpen()
51
52      print('Enter your commands below.\r\nInsert "exit" to leave the application.')
53      cmd=1
54      while 1 :
55          # get keyboard input
56          cmd = input(">>> ")
57          # Python 2 users
58          # input = raw_input(">>> ")
59          if cmd == 'exit':
60              ser.close()
61              break
62          else:
63              # send the string to the device
64              # (note that I happend a \n line feed to the characters - this is requested by device)
65              cmdBytes = (cmd + '\n').encode()
66              ser.write(cmdBytes)
67              out = ''
68              out = str(ser.readline())
69              if out != '':
70                  print(">>>" + out)

```

5. Technical drawings



OPTOGAMA, UAB
Mokslininku str. 6B,
LT-08412, Vilnius, Lithuania
+37052194884
sales@optogama.com
www.optogama.com



OPTOGAMA